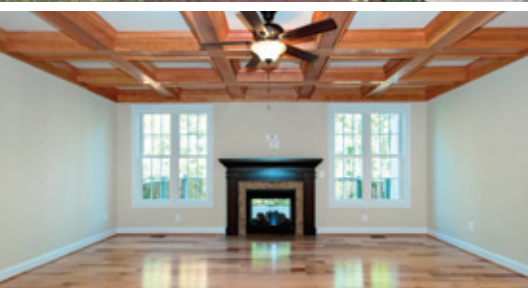


— LUNCH SERVED BY HOT CAKES & DRAWINGS FOR DOOR PRIZES —



# Realtor Luncheon

Tuesday, October 25th  
11AM - 2PM

*The Ashford*  
AT GLENMORE  
5 Bedrooms, 5 Baths

Main Level	1,851 sq. ft.
Upper Level	2,019 sq. ft.
Lower Level	1,132 sq. ft.
Finished Sq. Footage	5,002 sq. ft.
Unfinished Lower Level	719 sq. ft.
Garage	495 sq. ft.



Learn more about the Piedmont difference!



facebook.com/thinkpiedmont  
twitter.com/thinkpiedmont

MLS#491062

1113 Cambridge Hill Ln.  
Keswick, VA 22947



David Garono	434 566 1007
Jim Chapman	703 930 0696
Greg Slater	434 981 6655
Jodi Mills	434 466 7220
Jeff Robertson	434 249 2540

RSVP BY  
OCTOBER 21, 2011  
(IF YOU CAN) JODI MILLS  
434 466 7220  
jmills@thinkpiedmont.com



DIRECTIONS:  
From I-64E, take US-250, Exit 124 (Shadwell/Charlottesville). Turn right on Richmond Rd./US-250E. Right at traffic light on Glenmore Way. Right on Piper Way. Right on Darby Rd. Right on Cambridge Hill Ln. Model is 2nd home on left.



thinkpiedmont.com

P.O. Box 220  
Crozet, VA 22932  
434 975 7445  
thinkpiedmont.com



— Model Homes open Tuesday thru Sunday, 11am-5pm —